

Warragamba Dam

Heritage Walk

The building of Warragamba Dam was a monumental undertaking, harnessing groundbreaking engineering technology and a workforce from around the world. Learn more about Warragamba Dam's unique history by taking a short walk through the grounds. Informative signs and heritage items along the way reveal the stories behind the dam's construction and ongoing management.



SUGGESTED WALKING ROUTES

- 20 MINUTES** **Viewing Platforms** (Signs 1 to 11)
- 10 MINUTES** **Haviland Park** (Signs 12 to 18)
- 30 MINUTES** **History & Heritage** (Signs 7 to 21)
- 90 MINUTES** **The full circuit** (Signs 1 to 26)

Times are approximate only and include reading time

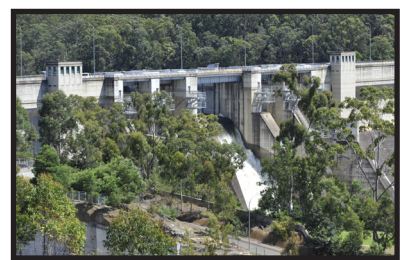
- Follow the information signs to discover:**
- Welcome to Warragamba Dam
 - Catchment, Lake and Dam
 - Giant Valves
 - Workers Memorial
 - Eco Friendly Building Design
 - Surveying for a Safe Dam
 - 18 Ton Cableway
 - Concrete Batching and Ice Plants
 - The Auxiliary Spillway
 - Inspectors and Overseers
 - The Dam Builders
 - Haviland Park
 - Haviland Park Fountain
 - Deep Water Supply
 - Aggregate - The Heart of the Dam
 - Rock Core Samples
 - The Warragamba Underground
 - Building a Dam
 - Large Heritage Display
 - A 'Temporary' Building
 - The Aerial Ropeway
 - From Dining Room to Picnic Area
 - Farnsworth Avenue
 - Distribution Reservoirs
 - Bushfires



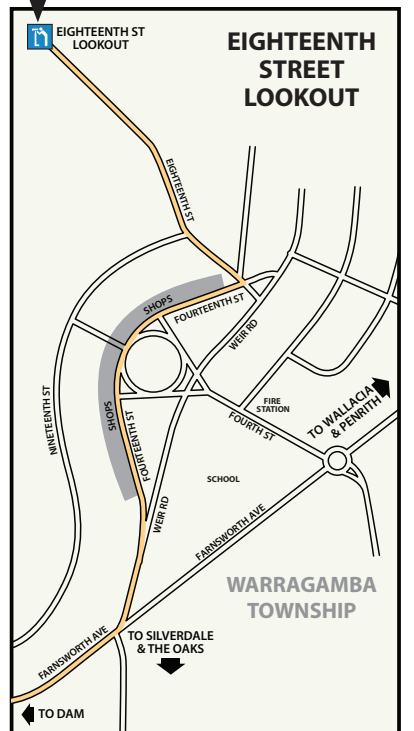
Visit the open air Heritage Display (sign number 19) for a glimpse into Warragamba's past

LEGEND

- Visitor Centre
- Set-down area
- Parking
- Disabled & coach parking
- Walking path without stairs
- Walking path with stairs
- Public road
- No public vehicle access
- Drinking water
- Viewing area
- Picnic shelters
- Toilets and disabled toilets
- Barbeque Area



View of the dam from Eighteenth Street Lookout



Visit the Eighteenth Street Lookout for distant views of the dam wall

Warragamba Dam Wall and Terraces Walk



Explore Warragamba Dam close up. Walk across the Auxiliary Spillway and down to the Dam wall to take in amazing views of Lake Burragorang and its upstream catchment.

A walk through the Terrace Gardens below will provide you with a spectacular view of the Warragamba Dam spillway and gates.

Information signs dotted throughout the site offer you insights into historical and contemporary stories about this engineering masterpiece.



| LEGEND | |
|--------|---|
| | Visitor Centre |
| | Set-down area |
| | Parking |
| | Disabled & coach parking |
| | Shuttle Bus Stop <small>This service is currently not available due to COVID-19.</small> |
| | Walking path without stairs |
| | Walking path with stairs |
| | Public road |
| | No public vehicle access |
| | Drinking water |
| | Viewing area |
| | Picnic shelters |
| | Toilets and disabled toilets |



| SUGGESTED WALKING ROUTES | |
|--------------------------|---|
| | Visitor Centre to dam wall Walking path without stairs - 2.4km return (1.5hrs) Note- steep incline. |
| | Visitor Centre to dam wall Walking path with stairs 0.6km return (45 mins) |
| | Visitor Centre to lower view Walking path with stairs 1.75km return (1.5hrs) |

Times are approximate only and include reading time

- Follow the information signs to discover:
- 1 What a view! Take in Lake Burragorang and its Special Area
 - 2 Infographic: fun facts and figures for Warragamba Dam
 - 3 Who calls Lake Burragorang home? Amazing eels and more
 - 4 A blooming good time: a history of the terraced gardens
 - 5 Spills and thrills: how the flood gates work
 - 6 Flow here in case of emergency: the Auxiliary Spillway
 - 7 What happened to the suspension bridge?
 - 8 Where does the water go? The journey beyond Warragamba Dam
 - 9 Some pretty cool innovation: A refrigeration plant on site?
 - 10 The heavy lifters: the 10 Ton cableway
 - 11 A chip off the old block: commemorating a monumental construction
 - 12 What's inside the dam? You might be surprised!
 - 13 Flow here in case of emergency: the Auxiliary Spillway

- Uneven surfaces, wear appropriate footwear and watch your step**
- Supervise children at all times**
- Carry a water bottle**